



SMART DIAMOND
— TOOLS PTY LTD —



**FLOOR GRINDING /
POLISHING
PRODUCT
CATALOGUE 2023**

4 / GRINDING MACHINES

Quality floor grinding machines at amazing prices.

9 / SCARIFIERS

Remove concrete and coatings faster and more effectively with our scarifying machines.

11 / HANDHELD GRINDERS / POLISHERS

We have a HUGE range of angle grinders, handheld grinders and polishers to suit all needs! See our best sellers here...

13 / WERKMASTER

SmartDiamond Tools is the Australian distributor of WerkMaster's award winning products, systems and solutions for concrete, stone & terrazzo refinishing. Check them out here!

15 / GRINDING SHROUDS

Biggest range of 5" and 7" dust shrouds for your angle grinder.

17 / ADAPTOR PLATES

Save time and money with our universal slide-on system on your machine.

18 / GRINDING SHOES

Join the rest of Australia in saving money on your grinding consumables.

21 / CUP WHEELS

Check out one of the largest ranges of cup wheels available down under.

28 / GRINDING PLATES / WEDGE BLOCKS

Kit out your old school machines with our top quality diamonds.

29 / CORNER GRINDING / POLISHING

Q: What do I do with these rotten corners?

A: Read page 29 of this catalogue.

31 / GRINDING PLUGS

Plug your Terrco or Floorex with the best range you will find in Oz.

32 / POLISHING MACHINES

Polivac polishing machines to make that final finish pop.

21 / CUP WHEELS

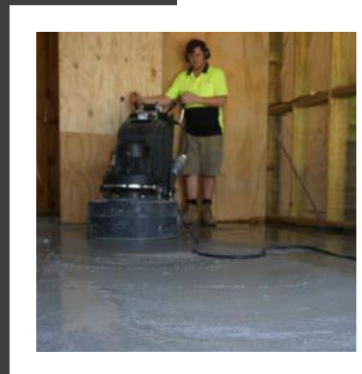
Check out one of the largest ranges of cup wheels available down under.

34 / MULTIPLATE

Convert your Polivac floor polisher to a multi-purpose concrete preparation machine.

36 / POLISHING PUCKS / FLOOR PADS

Use Smart's tried and tested pucks to bring the gloss to the next level. Finish your floor the right way with our range of 17" and 20" pads.



Contact us for a price list today!



SMART DIAMOND
— TOOLS PTY LTD —

**GRINDING /
POLISHING
TOOLS**

Contact us for a
price list
today!

ABOUT Smart Diamond Tools

Smart Diamond Tools is a leading manufacturer and supplier of high quality diamond tools and machinery. Australian owned and family run, we established in Melbourne in 1989 and have been supplying the concreting and construction industries throughout Australia for 30 years. Visit us in store or call now on 1300 763 328 for Australia wide delivery.



Free shipping for orders over \$1000 ex GST (*excludes machinery, liquids & adaptor plates)

All prices shown are exempt of GST + 10%



**WANT RELIABILITY? POWER?
EUROPEAN QUALITY?
THE BEST WARRANTY & AFTER SALES SERVICE?**

- ✓ High torque gear-driven planetary system
- ✓ 5 year replacement warranty on gearbox (*conditions apply)
- ✓ 2 year bumper to bumper warranty
- ✓ Top quality Siemens motor and Schneider inverter (520mm uses Taiwan Teco inverter)
- ✓ Highest quality Japanese bearings and oil seals
- ✓ Eton brand switches
- ✓ LED headlight and USB charging port as standard
- ✓ 20% more efficient than popular belt-driven grinders

Built tough for the Australian market!

GRINDING MACHINES



Redback 450mm - \$8,545.00
3-head planetary floor grinder

Features top quality Siemens motor, Schneider inverter, highest quality Japanese bearings and oil seals, Eton brand switches, LED headlights and USB charging port. 5 year replacement warranty on gearbox (conditions apply) and 2 year bumper to bumper warranty.

Motor:	4HP
Voltage:	Single phase 240V
Work Area:	450mm
Grinding Pressure:	110kg
Speed:	0-1200rpm
Weight:	168kg
Dimensions:	862x460x950mm



Redback 520mm - \$12,545.00
3-head planetary floor grinder

Features top quality Siemens motor, Taiwan Teco inverter, highest quality Japanese bearings and oil seals, Eton brand switches, LED headlight and USB charging port. 5 year replacement warranty on gearbox (conditions apply) and 2 year bumper to bumper warranty.

Motor:	5HP
Voltage:	3-phase 415V
Work Area:	520mm
Grinding Pressure:	130kg
Speed:	0-1200rpm
Water Tank:	20L
Weight:	220kg
Dimensions:	1060x520x1200mm

GRINDING MACHINES



All also available in
SELF-PROPELLED
and REMOTE
CONTROL versions



**Redback 650mm -
Self Propelled**

\$20,450.00

3-head planetary floor grinder

**Redback 760mm -
\$21,790.00**

3-head planetary floor grinder

**Redback 760mm -
\$23,790.00**

4-head planetary floor grinder

All feature top quality Siemens motor, Schneider inverter, highest quality Japanese bearings and oil seals, Eton brand switches, LED headlight and USB charging port. 5 year replacement warranty on gearbox (conditions apply) and 2 year bumper to bumper warranty.

Motor:	10HP
Voltage:	3-phase 415v
Work Area:	650mm
Grinding Pressure:	206kg
Speed:	0-1200rpm
Water Tank:	25L
Weight:	350kg
Dimensions:	1170x650x1200mm

Motor:	15HP
Voltage:	3-phase 415v
Work Area:	760mm
Grinding Pressure:	300kg
Speed:	0-1200rpm
Water Tank:	30L
Weight:	450kg
Dimensions:	1360x760x1300mm

Motor:	15HP
Voltage:	3-phase 415v
Work Area:	760mm
Grinding Pressure:	300kg
Speed:	0-1200rpm
Water Tank:	30L
Weight:	500kg
Dimensions:	1360x760x1300mm

GRINDING MACHINES



Redback 1520mm - \$189,000
8-head ride-on floor grinder

The largest gear-driven ride-on floor grinding machine available, with a 1520mm work area. Easy to operate and incredibly effective at completing large areas in a short time. Features integrated dust extraction system and additional weight to adjust head pressure.

Motor:	2 x 15HP
Voltage:	3-phase 415v
Speed:	0-1200rpm
Vacuums:	2 x 10HP attached
Weight:	1800kg
Dimensions:	1520x1930mm



Redback Edge Grinder - \$7,995
300mm edge grinder

Precision designed edge grinding machine with the body and grinding head adjustable to 45 degrees. Features a unique electrical lifting system for rear wheels, dust collection port, adjustable handle and guiding device.

Motor:	4HP (3KW)
Voltage:	Single phase 220v
Speed:	0-1200rpm
Weight:	120kg
Dimensions:	1175x485x900mm

GRINDING MACHINES

The best value small grinder on the market!!



A250B - \$1,990.00
10" (250mm) floor grinder

Compact 250mm floor grinder for wet and dry applications. Easy to transport with its compact size and foldable handle. Head can be turned 80 degrees left or right, enabling easy grinding close to walls. Features a detachable dust shroud, vacuum port and water port.

Motor:	3HP (2.2KW)
Speed:	1410rpm
Weight:	67kg
Dimensions:	825x432x860mm



A340 - \$2,500.00
340mm floor grinder

Compact and robust single head floor grinder, ideal for small to medium grinding jobs. 340mm wide grinding head. Features a pre-installed adaptor plate to enable use of AuSKut's slide-on diamonds.

Motor:	3HP (2.2KW)
Speed:	650rpm
Weight:	100kg
Dimensions:	900x400x1000mm

SCARIFIERS



SCR200P - \$2,365.00
8" petrol scarifier

Honda petrol walk-behind scarifying machine ideal for coating removal, creating non-slip surfaces, floor preparation and road maintenance. For use with our M200 drum.

Motor:	Honda GX160 5.5HP
Working Width:	200mm
Working Depth:	3-5mm
Weight:	61kg
Dimensions:	1650x480x950mm



SCR200H4 - \$4,180.00
8" heavy duty petrol scarifier

Honda petrol walk-behind scarifying machine ideal for coating removal, creating non-slip surfaces, floor preparation and road maintenance. Includes 4-shaft heavy duty drum (M200HD).

Motor:	Honda GX160 5.5HP
Working Width:	200mm
Working Depth:	3-5mm
Weight:	105kg
Dimensions:	820x490x810mm



SCR250H9 - \$7,820.00
10" petrol scarifier

Honda petrol walk-behind scarifying machine ideal for coating removal, creating non-slip surfaces, floor preparation and road maintenance. Includes extra heavy duty drum (M250).

Motor:	Honda GX270 9HP
Working Width:	250mm
Working Depth:	5-10mm
Weight:	132kg
Dimensions:	910x470x880mm

SCARIFIERS

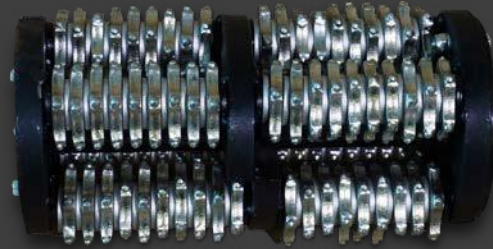


Optional edger assembly available

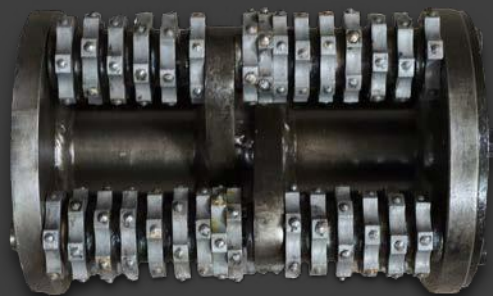
SCR200E - \$2,195.00
8" electric scarifier

Versatile electric scarifying machine ideal for sidewalk repair, coating and line removal, floor preparation and creating non-slip surfaces. For use with our M200 drum.

Motor:	240V 2.2KW
Working Width:	200mm
Working Depth:	2-3mm
Weight:	60kg
Dimensions:	820x490x810mm



M200 - \$725.00
8" carbide flail cutters cage assembly including drum, 76 x 6mm TCT cutters and 104 x washers. Replacement cutters available (sold separately).



M200HD4 - \$1045.00
8" carbide flail cutters cage assembly including drum and 60 x TCT cutters. Replacement cutters available (sold separately).



M250 - \$1,360.00
10" carbide flail cutters cage assembly including drum and 90 x TCT cutters. Replacement cutters available (sold separately).



HAND-HELD GRINDERS/ POLISHERS

Smart Diamond Tools stocks an extensive range of quality angle grinders to suit all needs from the brands pictured below.

Call us on 1300 637 347 or check out the website for our current range.

metabo

DEWALT

HIKOKI

E E EIBENSTOCK

A sample of our best sellers...



Metabo W24-230MVT - \$289.00

230mm angle grinder

9" (230mm) grinder with Marathon motor and patented dust protection for long service life. Features deadman switch, tool-free adjustable guard, anti-vibration handle and rotating gear handle. Pictured with our 7ShroudH (sold separately).

Metabo WEV15-125INOX - \$383.00

125mm angle grinder

5" (125mm) robust, powerful grinder with high gear reduction and adjustable reduced speed for cool finish. Features Marathon motor, VTC full-wave electronics, M-quick tool-free disc change and S-automatic safety clutch. Pictured with Metabo GED125 shroud & D-handle (sold separately).

Metabo WEA17-125- \$392.00

125mm angle grinder

The power of a larger grinder and compactness of a small one for quickest material removal. Features Marathon motor, TC full-wave electronics, M-quick tool-free disc change and S-automatic safety clutch. Pictured with Metabo GED125 shroud and D-handle (sold separately).

Motor:	2400W
No-Load Speed:	6600rpm
Disc Diameter:	230mm
Weight:	5.8kg

Motor:	1550W
No-Load Speed:	2000-7600rpm
Disc Diameter:	125mm
Weight:	2.5kg

Motor:	1700W
No-Load Speed:	11000rpm
Disc Diameter:	125mm
Weight:	2.5kg

HAND-HELD GRINDERS/ POLISHERS



EP7FB - \$695.00
7" (180mm) wet/dry polisher

Suitable for wet or dry polishing of concrete and stone. Features variable speed, soft start and overload protection.

Motor:	2200W
No-Load Speed:	1000-2400rpm
Disc Diameter:	180mm
Weight:	6kg



AG125 - \$695.00
5" (125mm) concrete grinder

Features variable speed, load indicator, adjustable ergonomic handle, tool-free sliding cover for edge grinding and dust control skirt.

Motor:	2200W
No-Load Speed:	4300-7200rpm
Disc Diameter:	125mm
Weight:	4.7kg



WETPOL5-900 - \$495.00
5" (125mm) wet polisher

Suitable for wet polishing of concrete and stone. Features double transmission and variable speed.

Motor:	800W
No-Load Speed:	700-3000rpm
Disc Diameter:	125mm
Weight:	4.5kg

Australian distributor



SMART DIAMOND
TOOLS PTY LTD

WERKMASTER™
Ultra Floor Systems



WerkMaster Scarab - \$2,700
Handheld grinding/polishing machine

The ideal handheld machine for countertops, floors, stairs and ledges. Gets within 3mm of the wall! The 5 counter-rotating heads add stability and produce a superior finish. Features quick change tooling, dust control and optional water feature. Polisher and tooling sold separately.

Footprint:	310x200x180mm
Disc Size:	76mm
Weight:	20kg (w/o polisher)
Vacuum Req:	100 CFM



WerkMaster Edge - \$9,995
Edge grinder/polisher

A compact and powerful complement to any large floor machine. Excellent for concrete edging, grinding, polishing and surface prep with 350mm work area. Gets within 3mm of the wall! Disassembles for easy transport. Features quick change tooling and dustless grinding when attached to appropriate dust extraction. Tooling sold separately.

Motor:	3HP 240V
No-load Speed:	400-1000rpm
Disc Size:	127mm
Weight:	93.4kg
Vacuum Req:	200 CFM

MOHS HARDNESS TESTKIT - \$250.00

Determine the overall hardness or softness of your concrete or stone surface. Testing will save money, reduce diamond wear and decrease time spent. Provides a general guide only. Each kit comes with a storage case and range of picks.



WERKMASTER™
Ultra Floor Systems

WERKMASTER SCARAB TOOLING

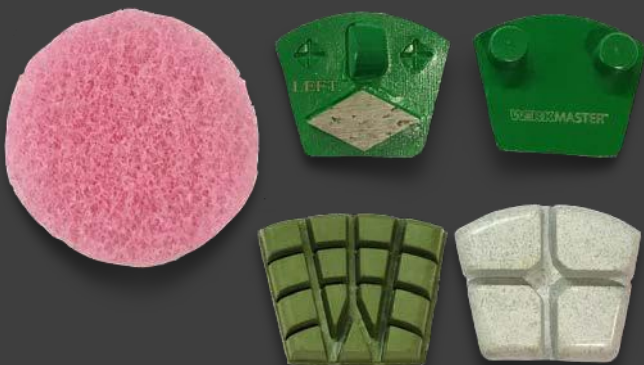
For use with the WerkMaster Scarab. Full range of 3" (76mm) diamond abrasive tooling, resins and buffing pads. Everything you need to remove coatings, grind, polish and refinish concrete, terrazzo and stone.



	Description:	Code:
Turbo Shark	3 x 16G seg - \$130.00	W002-1428
Teardrop	3 x 30/40G seg - \$130.00	W002-1524
	3 x 70/80G seg - \$130.00	W002-1525
Achromic Pad	100G - \$50.00	W003-0267
Resin Pad	200G - \$55.00	W003-0278
	400G - \$55.00	W003-0279
	800G - \$55.00	W003-0280
	1500G - \$55.00	W003-0281
	3000G - \$55.00	W003-0282
Nylon Pad	Pink cleaning/buffing pad - \$8.00	W011-0015

WERKMASTER EDGE TOOLING

For use with the WerkMaster Edge. Full range of "plug n go" options including diamond abrasive tooling, resins and buffing pads. Everything you need to remove coatings, grind, polish and refinish concrete, terrazzo and stone.



	Description:	Code:
PCD + Shark	Anti-clockwise - \$130.00	W002-1349
	Clockwise - \$130.00	W001-1350
Shark	2 x 16G segs - \$90.00	W002-1413
Standard Tear	1 x 16G seg - \$55.00	W002-1319
	1 x 30/40G seg - \$55.00	W002-1392
	1 x 70/80G seg - \$55.00	W002-1409
Achromic Pad	100G - \$22.00	W003-0247
Resin Pad	200G - \$40.00	W003-0236
	400G - \$40.00	W003-0237
	800G - \$40.00	W003-0238
	1500G - \$40.00	W003-0239
	3000G - \$40.00	W003-0240
Nylon Pad	Pink buffing pad - \$20.00	W011-0042

5" Shrouds



5SHROUD - \$95.00

Suits 125mm grinder with a 50mm clamp. Hard plastic with bristle edge. Clip-off front for edge grinding. 38mm OD vacuum port.



5SHROUDC - \$79.00

Suits 125mm grinder with an adjustable clamp to fit 42-55mm. Clear hard plastic with bristle edge. Clip-off front for edge grinding. 35mm OD vacuum port.



5SHROUDG - \$65.00

Suits 125mm grinder. Hard plastic with bristle edge. Swing front for edge grinding. 32mm OD vacuum port.



5SHROUDM - \$55.00

Suits 125mm grinder with multiple clamp sizes available (39mm, 42mm, 46mm, 49mm). Steel with velcro/vinyl skirt. Not suitable for edge grinding. 33mm OD vacuum port.



DWE46150 - \$125.00

DeWalt brand - suits 115mm and 125mm grinders with keyless clamp. Hard plastic with bristle edge. Swing front for edge grinding. AirLock vacuum port.

7" Shrouds



7SHROUD - \$99.00

Suits 180mm grinder and available in 2 clamp sizes (65mm, 75mm). Hard plastic with bristle edge. Clip-off front for edge grinding. 38mm OD vacuum port.



7SHROUDG - \$125.00

Suits 180mm grinder. Hard plastic with bristle edge. Swing front for edge grinding. 35mm ID vacuum port.



7SHROUDH - \$240.00

Suits 180mm grinder with an adjustable clamp to suit 65-75mm. Alloy. Lift-up door for edge grinding. 40mm OD vacuum port.



7SHROUDM - \$69.00

Suits 180mm grinder with multiple clamp sizes available (65mm, 75mm). Steel with velcro/vinyl skirt. Not suitable for edge grinding. 38mm OD vacuum port.



7SHROUDR - \$129.00

Suits 180mm grinder with rubber spacers to suit popular brands i.e. DeWalt, Makita, Milwaukee, Metabo & Bosch. Hard rubber with steel wear strip. Flip-up door for edge grinding. 58mm ID vacuum port.



7SHROUDTYRO - \$325.00 125mm \$250-

Suits 180mm grinder. Composite body with rubber diaphragm. Flip-up front for edge grinding. 35mm ID / 51mm OD vacuum port.



7SHROUDHOLM - \$425.00 125mm \$375-

Holer brand - suits 180mm grinder. Alloy construction. Flip-up front for edge grinding. 35mm ID / 51mm OD vacuum port.



DWE46170 - \$219.00

DeWalt brand - suits 180mm grinders with keyless clamp. Rubber with steel wear strip. Flip-up front for edge grinding. AirLock vacuum port.

ADAPTOR PLATES

Replace your current grinding machine base plate with Smart's adaptor plate to enable use of Smart's "Redi-Lock" style grinding shoes*. **SAVE TIME & MONEY** with our universal slide-on system!

*Adaptation of your machine is not guaranteed. Extra modification may be required.

CONBLAST6 - \$79.00

6" (160mm) adaptor plate to suit Blastrac 435.



CONLAV9 - \$95.00

9" (225mm) adaptor plate to suit Lavina 20.



CONH10 - \$115.00

10" (250mm) universal adaptor plate to suit CUB Grinder, Crete Mower or Schwamborn DSM250.



CONTPG10 - \$129.00

10" (250mm) adaptor plate to suit Meteor 250.



CONH12 - \$129.00

12" (300mm) universal adaptor plate to suit Dimas machines.



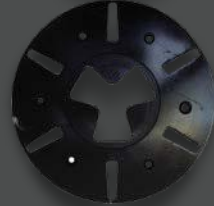
CONTPG7 - \$109.00

7" (180mm) adaptor plate to suit Satellite SP Active Planetary.



CONHTC270 - \$149.00

270mm adaptor plate to suit HTC 800.



CONSCHPLATE 7, 8 & 9 - \$119

7", 8" & 9" adaptor plates to suit Schwamborn DSM450, DSM530, DSM530S, DSM650 and DSM650S.



CONHTC6 - \$85.00

6" (160mm) adaptor plate to suit HTC 420.



CONSMALLH - \$10.00

55x40mm small adaptors that can be fitted to most existing steel base plates.



CONHTC9 - \$125.00

9" (230mm) adaptor plate to suit HTC 650.



JSADAPT - \$20.00

Adaptor plate to suit Jian Song (Topstone) grinders.



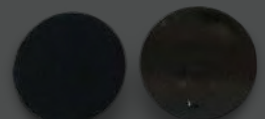
CONKLIN8 & 9 - \$140.00 & \$149.00

8" and 9" (230mm) adaptor plates to suit most Klindex machines.



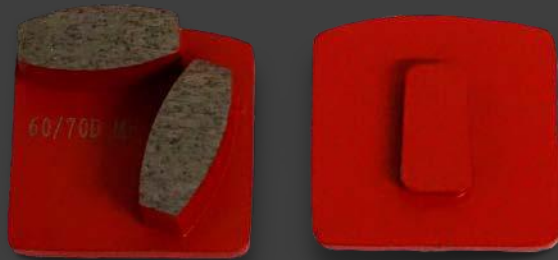
VELCROHS - \$23.00

3" (80mm) velcro slide-on plates to easily change over from diamonds to pucks or ceramics.



SAVE TIME & MONEY!!!

GRINDING SHOES

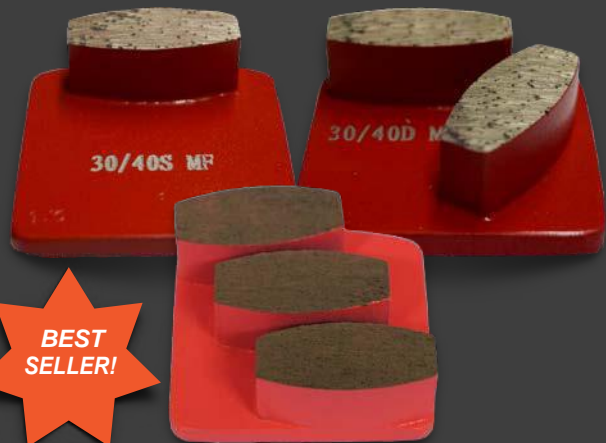


SAVE TIME & MONEY with Smart's universal slide-on system! Check out our range of adaptor plates to use these diamonds on your machine.

Best value grinding diamonds in Australia!!

PROFESSIONAL "REDI-LOCK" STYLE SHOES

Smart's range of professional slide-on diamonds, our most popular and best value for money! 13mm high coffin shaped segments. Available in single, double and triple segments, various grits and bonds (see chart).



BEST SELLER!

Extra Hard Floor Very Hard Floor Hard Floor Medium Floor Soft Floor Very Soft Floor Extra Soft Floor

XHF - Pink	VHF - Blue	HF - Black	MF - Red	SF - Yellow	VSF - Green	XSF - White
-------------------	-------------------	-------------------	-----------------	--------------------	--------------------	--------------------

Extra Soft Bond Very Soft Bond Soft Bond Medium Bond Hard Bond Very Hard Bond Extra Hard Bond

	Single	Double	Triple
16 Grit: S - \$30 D - \$40	HSRK16S VHF HF MF SF VSF	HDRK16S VHF HF MF SF VSF	
20/25 Grit S - \$28 D - \$38	HSRK25S XHF VHF HF MF SF VSF	HDRK25S VHF HF MF SF	
30/40 Grit S - \$25 D - \$35 T - \$50	HSRK30S VHF HF MF SF VSF	VSFHDRK30S XHF VHF HF MF SF VSF	H3RK30S XSF
60/70 Grit S - \$25 D - \$35	HSRK60S VHF HF MF SF VSF	HDRK60S VHF HF MF SF VSF	
80 Grit S - \$25 D - \$35	HSRK80S VHF HF MF SF VSF	HDRK80S VHF HF MF SF VSF	
120/140 Grit S - \$25 D - \$35	HSRK120S VHF HF MF SF VSF	HDRK120S XHF VHF HF MF SF VSF	
160 Grit T - \$49			H3RK160S XHF VHF

GRINDING SHOES

Extra Hard Floor	Very Hard Floor	Hard Floor	Medium Floor	Soft Floor	Very Soft Floor
XHF - Pink	VHF - Blue	HF - Black	MF - Red	SF - Yellow	VSF - Green
Extra Soft Bond	Very Soft Bond	Soft Bond	Medium Bond	Hard Bond	Very Hard Bond

TRADE "REDI-LOCK" STYLE SHOES

Our trade range of slide-on diamonds for the budget conscious. 13mm high hexagon shaped segments. Available in single or double segments, various grits and bonds (see chart).



	Single	Double
30/40 Grit S - \$22 D - \$25	HSRK30T VHF HF MF SF VSF	HDRK30T VHF HF MF SF VSF
60/70 Grit S - \$22 D - \$25	HSRK60T VHF HF MF SF	HDRK60T HF MF SF
120/140 Grit D - \$25		HDRK120T HF MF SF

ARROW SEGMENTS

Professional slide-on diamonds with 15mm high arrow shaped segments for coatings removal. Available in single and double segments, 25 grit, various bonds (see chart).



	Single	Double
25 Grit S - \$28 D - \$38	AAS80S HF MF SF VSF	AAS80 HF MF SF VSF

STEP SEGMENTS

Professional slide-on diamonds with 11mm high step shaped segments aggressive grinding and coatings removal. Available in single or double segments, 25 grit, various bonds.



	Single	Double
25 Grit S - \$28 D - \$38	HSRKSTEP XHF MF	HDRKSTEP XHF MF VSF

GRINDING SHOES

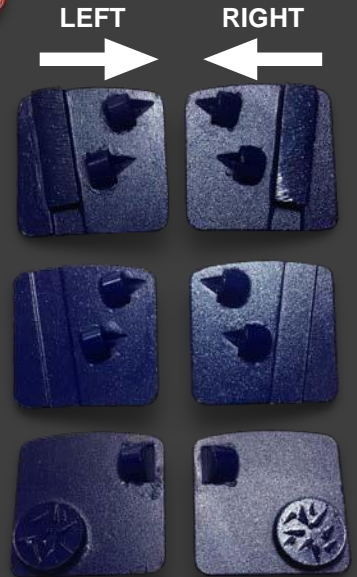
PCD SEGMENTS

Our range of PCD segment slide-on diamonds for aggressive grinding and coatings removal.

PCDSDS, PCD1 and PCD4 are available in LEFT or RIGHT, depending on the rotation of your machine.



Single PCD with 6 grit diamond segment - \$35	PCDS1D HF MF SF
Double PCD with 6 grit diamond segment - \$59	PCDS2D HF MF SF
1 x split PCD segment - \$33	PCD1SP
2 x split PCD segments - \$55	PCD2SP
2 x 1/3 PCD segments + 1 x diamond segment - \$62	PCDSDS
2 x 1/3 PCD segments - \$52	PCD1
1/2 PCD segment + 1 x mixed segment - \$62	PCD4



LOOSE SEGMENTS

Our professional 13mm high loose diamond segments are available in coffin or arrow shapes, various grits and bonds (see chart). Silver solder welding sheets also available.

	Coffin	Arrow
16 Grit \$13.90		SEGA16 SF
20/25 Grit SF/MF/HF-\$5.50 VSF/VHF-\$6.50	SEGC25 VHF HF MF SF VSF	SEGA25 HF
30/40 Grit SF/MF/HF-\$4.90 VSF/VHF-\$5.50	SEGC30 VHF HF MF SF VSF	
60/70 Grit \$4.90	SEGC60 HF MF SF	
80 Grit \$4.90	SFGC80 HF MF	
120/140 Grit \$4.90	SEGC120 HF MF	



Very Hard Floor	Hard Floor	Medium Floor	Soft Floor	Very Soft Floor
VHF - Blue	HF - Black	MF - Red	SF - Yellow	VSF - Green
Very Soft Bond	Soft Bond	Medium Bond	Hard Bond	Very Hard Bond

Best for REMOVAL OF COATINGS e.g. glue, paint, resin, etc

SUPER STRIPPER CUP WHEELS

Our "Super Stripper" grinding cup wheels have 25 grit rhomboid shaped 8mm high diamond segments for VERY aggressive concrete grinding and FAST removal of coatings.



5" (125mm)	6 segments (blue) - \$50	SS56
7" (180mm)	6 segments (blue) - \$75	SS76
	12 segments soft bond (blue) - \$110 12 segment very soft bond (yellow) - \$110	SS712 HF SS712 VHF
10" (250mm)	12 segments (blue) - \$145	SS1012
	12 segments hard bond (yellow) - \$145	SS1012 SF
	12 segments very hard bond (green) - \$150	SS1012 VSF

ARROW CUP WHEELS

Arrow segment grinding cup wheels for aggressive concrete grinding and removal of coatings.



4" (115mm)	5 x 10mm segments - \$60	TCW45A
5" (125mm)	6 x 10mm segments - \$75	TCW56A
6" (150mm)	8 x 10mm segments - \$90	TCW68A
7" (180mm)	6 x 15mm segments - \$115	TCW7625A
10" (250mm)	9 x 15mm segments - \$150	TCW109A

PCD CUP WHEELS

Grinding cup wheels with PCD diamond segments for aggressive concrete grinding and removal of coatings.



5" (125mm)	3x1/3 PCD segments + TCT - \$105	PCW5 PCW5R PCW5SP
	12 small PCD segments - \$115	
	9 split PCD segments - \$125	
7" (180mm)	6x1/3 PCD segments+TCT-\$150	PCW7 PCW7R PCW7SP
	12 small PCD segments-\$135	
	12 split PCD segments-\$160	
	3 PCD segments +6grit-\$120	SDS73
	6 PCD segments +6grit-\$180	SDS76
10" (250mm)	9x1/3 PCD segments + TCT-\$220	PCW10

CUP WHEELS

NOODLE CUP WHEEL - \$159

7" (180mm) cup wheel with 8 rhomboid diamond segments + 24 "noodle" diamond segments in very soft bond for QUICK removal of coatings.



RAPTOR CUP WHEELS

Special "raptor" segment cup wheels have 30 grit 5mm high diamond segments for aggressive concrete grinding and coating removal. Especially suited to removal of pressure sensitive glues.



5" (125mm)	10 x raptor segments-\$99	RAP5
7" (180mm)	12 x raptor segments-\$145	RAP7

STEPPED SEGMENT CUP WHEELS

Stepped segment grinding cup wheels have 25 grit 10mm high diamond segments for VERY aggressive concrete grinding and FAST removal of coatings



5" (125mm)	6 segments XHF - \$75	TCW56Step
7" (180mm)	8 segments extra soft bond- \$110	TCW78Step XHF
	8 segments very hard bond- \$110	TCW78Step VSF

CURVED SEGMENT CUP WHEELS

Our professional range of 25 grit curved diamond segment cup wheels for aggressive concrete grinding and coating removal.



5" (125mm)	6 x 8mm segments extra soft bond - \$65	TCW56P
7" (180mm)	3 x 12mm segments - \$85	TCW73P
	6 x 12mm segments extra soft bond - \$110	TCW76P XHF
	6 x 12mm segments soft bond - \$110	TCW76P HF
	6 x 12mm segments very hard bond - \$110	TCW76P VSF

BEST SELLER!

TURBO cup wheels

3" (65mm) CUP WHEELS

Trade quality 5mm high diamond segment cup wheels for aggressive to fine concrete grinding. The small size makes for easier grinding in corners and hard to reach places. Only available in soft bond for hard floors. M14 thread for use on 4.5" and 5" angle grinders.



	Use:	Code:
30/40 Grit	General purpose - \$55	TCW330
60 Grit	Fine - \$55	TCW360
120 Grit	Very fine - \$55	TCW3120

4" (100mm) CUP WHEELS

Trade quality 5mm high diamond segment cup wheels for aggressive to fine concrete grinding. Available in various grits, medium bond only.



	Use:	Code:
30/40 Grit	General purpose DIY - \$15	TCW49ECO
	General purpose BUDGET - \$15	TCWX
	9 segment aggressive - \$45	TCW49T
	16 segment general purpose-\$55	TCW416T
80 Grit	18 segment general purpose-\$55	TCW418T
	16 segment fine-\$55	TCW41680T
120 Grit	16 segment extra fine-\$55	TCW416120T

4.5" (115mm) CUP WHEELS

Trade quality 5mm high diamond segment cup wheels for aggressive to general purpose concrete grinding. Available in 30/40 grit, medium bond only.

	Use:	Code:
30/40 Grit	9 segment aggressive -\$50	TCW459
	18 segment general purpose - \$80	TCW4518

Hard Floor

Medium Floor

HF - Black

MF - Red

Soft Bond

Medium Bond

CUP WHEELS

5" (125mm) CUP WHEELS

For very aggressive to fine concrete grinding. Available in trade (5mm high segments) and professional (8mm high segments) qualities, various grits and bonds (see chart).



Our ultra professional range (5.5mm high segments) feature ultra high quality diamonds and are available in various grits, very soft bond only.



6" (150mm) CUP WHEELS

Trade quality 5mm high diamond segment cup wheels for aggressive to fine grinding. To suit HILTI. Available in various grits, medium bond only.

TRADE	Use:	Code:
16 Grit	9 segment aggressive MF-\$75	TCW5916T
30/40 Grit	5 segment (for multiplate use only) HF - \$25	TCW5MP
	9 segment aggressive HF MF VSF - \$65	TCW5930T
	16 segment general purpose HF MF - \$88	TCW51630T
	18 segment general purpose HF MF - \$95	TCW51830T
60 Grit	18 segment fine HF MF - \$95	TCW51860T
80 Grit	18 segment fine HF MF - \$95	TCW51880T
120 Grit	18 segment fine XHF HF MF - \$95	TCW518120T

PRO	Use:	Code:
30/40 Grit	7 segment "Hilti style" aggressive HF - \$85	TCWHIL5
	9 segment aggressive MF-\$85	TCW59P
	18 segment general purpose MF - \$110	TCW51830P

ULTRA PRO	Use:	Code:
30/40 Grit	9 segment aggressive VHF - \$85	TCW5930X
	18 segment general purpose VHF - \$110	TCW51830X
60 Grit	18 segment fine VHF - \$110	TCW51860X
120 Grit	18 segment fine VHF - \$110	TCW518120X

	Use:	Code:
30/40 Grit	9 segment aggressive - \$85	TCW69T
	18 segment general purpose - \$110	TCW618T
80 Grit	18 segment fine - \$110	TCW61880T

CUP WHEELS

7" (180mm) CUP WHEELS

For very aggressive to fine concrete grinding. Available in trade (5mm high segments) and professional (8mm high segments) qualities, various grits and bonds (see chart).



Our ultra professional range (5.5mm high segments) feature ultra high quality diamonds and are available in various grits, very soft bond only.



Extra Hard Floor

Very Hard Floor

Hard Floor

Medium Floor

Very Soft Floor

XHF - Pink

VHF - Blue

HF - Black

MF - Red

VSF - Green

Extra Soft Bond

Very Soft Bond

Soft Bond

Medium Bond

Very Hard Bond

TRADE	Use:	Code:
16 Grit	12 segment extra aggressive MF - \$99	TCW71216T
25 Grit	12 segment very aggressive-\$89	TCW71225T HF
	24 segment aggressive-\$110	TCW72425T HF
30/40 Grit	12 segment aggressive HF MF VSF - \$89	TCW71230T
	24 segment general purpose HF MF -\$110	TCW72430T
60 Grit	12 segment fine MF - \$89	TCW71260T
	24 segment fine HF MF - \$110	TCW72460T
80 Grit	12 segment fine MF - \$89	TCW71280T
	24 segment fine HF MF - \$110	TCW72480T
120 Grit	12 segment very fine MF - \$89	TCW712120T
	24 segment very fine XHF HF MF - \$110	TCW724120T

PRO	Use:	Code:
30/40 Grit	8 segment "Hilti style" aggressive HF - \$110	TCWHIL7
	12 segment aggressive MF - \$99	TCW712P
	24 segment general purpose MF - \$120	TCW72430P

ULTRA PRO	Use:	Code:
30/40 Grit	12 segment aggressive VHF \$110	TCW71230X
	24 segment general purpose VHF - \$125	TCW72430X
60 Grit	24 segment fine VHF - \$125	TCW72460X
120 Grit	24 segment fine VHF - \$125	TCW724120X

CUP WHEELS

Hard Floor

Medium Floor

HF - Black

MF - Red

Soft Bond

Medium Bond

FAN CUP WHEELS

Fan segment cup wheels for general purpose to fine concrete grinding. Various grits available, medium bond only.



5" (125mm)	7 segments 30/40 grit - \$75	TCW5F
	7 segments 60 grit - \$75	TCW5F60
	7 segments 120 grit - \$75	TCW5F120
6" (150mm)	7 large segments 30/40 grit Suits HILTI - \$86	TCW6F
7" (180mm)	12 segments 30/40 grit \$110	TCW7F
	12 segments 60 grit - \$110	TCW7F60
	12 segments 120 grit - \$110	TCW7120F

DOUBLE ROW CUPWHEELS

Double row segment cup wheels for general purpose to fine concrete grinding. Various grits and bonds available.



4" (100mm)	30/40 grit MF - \$49	DRCW4
	80 grit MF - \$49	DRCW480
5" (125mm)	30/40 grit MF - \$69	DRCW5
	80 grit MF \$69	DRCW580
	120 grit MF - \$69	DRCW5120
7" (180mm)	30/40 grit HF MF \$110	DRCW7
	80 grit MF - \$110	DRCW780
	120 grit MF - \$110	DRCW7120

CYCLONE CUP WHEELS

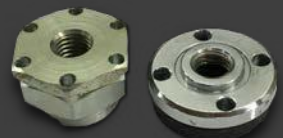
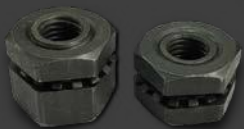
Cyclone turbo cup wheels for general purpose to fine concrete grinding. Various grits available, medium bond only.



4" (100mm)	30/40 grit - \$69	CTC4
5" (125mm)	30/40 grit - \$97	CTC5
	120 grit - \$97	CTC5120

We have cup wheel ADAPTORS to suit all your needs!

M14 short - M14 tall - M14 tall full thread - M14 Dewalt - M14 flange - 5/8"
Ask our friendly staff what you need to make our cup wheels work for you!



NEW!

4-pin impact socket cup wheel remover also now available! \$20



TO SUIT SATELLITE

7" (180mm) diamond segment floor grinding cup wheels to suit Satellite machines. Available in various grits and bonds.



	Use:	Code:
16 Grit	3 segment extra aggressive HF MF - \$99	TPG7316
	6 segment aggressive HF MF - \$120	TPG7616
25 Grit	3 segment extra aggressive VHF HF MF - \$89	TPG7325
	6 segment aggressive HF MF \$110	TPG7625
30/40 Grit	3 segment extra aggressive HF MF - \$79	TPG7330
	6 segment aggressive HF MF SF - \$99	TPG7630
	9 segment general purpose HF MF - \$120	TPG7930
80 Grit	9 segment general purpose & fine VHF MF - \$120	TPG7980
120 Grit	9 segment fine VHF MF - \$120	TPG79120

TO SUIT METEOR

10" (250mm) diamond segment floor grinding cup wheels to suit Meteor machines. Available in various grits and bonds.



	Use:	Code:
16 Grit	3 segment extra aggressive HF MF - \$120	TPG10316
	6 segment aggressive HF MF - \$160	TPG10616
25 Grit	3 segment extra aggressive HF MF - \$110	TPG10325
	6 segment aggressive HF MF - \$150	TPG10625
30/40 Grit	3 segment extra aggressive HF MF - \$99	TPG10330
	6 segment aggressive HF MF - \$135	TPG10630
	9 segment general purpose HF MF - \$160	TPG10930
80 Grit	9 segment general purpose & fine MF - \$160	TPG10980
120 Grit	9 segment fine MF - \$160	TPG109120

GRINDING PLATES

TO SUIT RICHMOND

8" diamond segment grinding plates to suit Richmond grinders.



12 x 30/40 grit segment for general purpose grinding - \$180	RGH12
12 x 30/40 grit segment for HARD concrete - \$180	RGH12H
24 x 25 grit segment for glue, paint & resin removal - \$195	RGH24
6 x 25 grit arrow segment for glue, paint & epoxy removal - \$169	RGHA

TO SUIT CRETEMOWER/CUB

10" diamond segment grinding plates to suit Crete Mower and CUB machines.

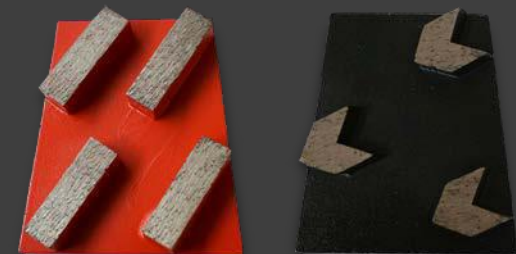


6 x 30/40 grit segment for glue, paint & epoxy removal - \$150	HGH6
10 x 30/40 grit segment for MEDIUM concrete - \$180	HGH10
20 x 30/40 grit segment for general purpose grinding - \$220	HGHGP
20 x 30/40 grit segment for HARD concrete - \$220	HGHHC

WEDGE BLOCKS

DIAMOND WEDGE BLOCKS

For use with Flextool and MasterFinish wedge block grinding machines.



4 x 30/40 grit segment for general purpose grinding - \$50	WBGF
4 x 80 grit segment for fine grinding - \$50	WBGF80
4 x 30/40 grit segment for hard concrete - \$50	WBH
3 x arrow segment for glue, paint & epoxy removal - \$55	WBA

CORNER & EDGE GRINDING

Do you find it hard to grind or polish CORNERS, STAIRS, EDGES, CURVES?? Difficult to BEVEL sharp edges?? Smart Diamond Tools has your solution!



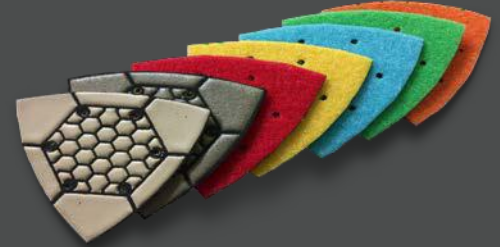
DIAMOND CORNER GRINDER - \$85.00

For use with die grinders (8mm round shank), Smart's diamond corner grinder makes corners a breeze! Available in 30, 60 and 120 grits.



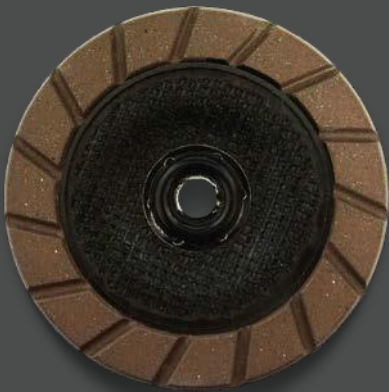
METAL BOND TRIANGLE PADS - \$35.00

Triangle shaped diamond grinding pads. Suitable for use on the Metabo Cordless Multi-Tool. Ideal for corners and hard to reach places. Available in 30, 60 and 120 grits.



TRIANGLE POLISHING PADS - \$20.00

Flexible triangle shaped polishing pads with velcro backing. Suitable for use on the Metabo Cordless Multi-Tool. Ideal for corners and hard to reach places. Available in 50, 100, 200, 400, 800, 1500 and 3000 grits.



EDGEMAXX CERAMIC CUP WHEELS - \$130.00

5" ceramic edging cup wheels for blending edge work or reducing scratches from metal bond grinding. Suitable for dry grinding. M14 thread for use on angle grinders. Available in 30, 50, 100 and 200 grits.



DIAMOND ROUTER BITS - \$115.00

Diamond router bits for shaping edges. M14 thread for use on 5" variable speed grinders. Available in 10mm radius or 45 degree angle, both in 30/40 and 120 grits.

CORNER & EDGE GRINDING

metabo



METABO DIE GRINDER GE950GPLUS - \$610.00

Light and versatile hand-held variable speed die grinder with spindle lock. Features Metabo's S-automatic safety shutdown, restart protection and removable protective rubber cap. Ideal for use with Smart's diamond corner grinder.

Motor:	950W
No-load speed:	2500-8700rpm
Collar dia:	43mm
Weight:	1.7kg

METABO CORDLESS MULTI- TOOL MT18LTX - \$237.00

Metabo's oscillating cordless multi-tool is suitable for cutting, grinding and polishing. Features VTC electronics to maintain constant speed even under load, quick tool change system and double LED lights. Ideal for use with Smart's corner grinding and polishing pads.

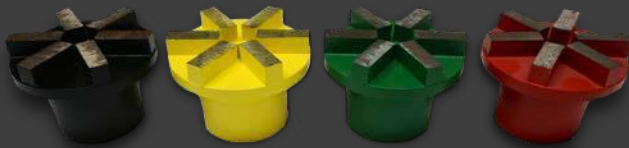
Battery:	18V Li-ion
No-load speed:	7000-18000rpm
Oscillation L/R:	1.6 degrees
Weight:	1.8kg

GRINDING PLUGS

Extra Hard Floor	Very Hard Floor	Hard Floor	Medium Floor	Soft Floor	Very Soft Floor	Extra Soft Floor
XHF - Pink	VHF - Blue	HF - Black	MF - Red	SF - Yellow	VSF - Green	XSF - White
Extra Soft Bond	Very Soft Bond	Soft Bond	Medium Bond	Hard Bond	Very Hard Bond	Extra Hard Bond

DIAMOND SEGMENT PLUGS

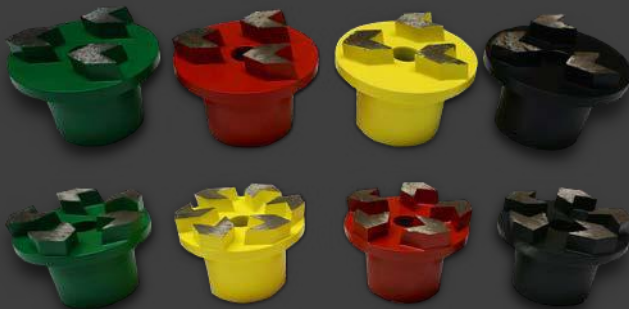
50mm plugs with 74mm plate for use on Floorex and Terrco grinding machines. 6 x 10mm high diamond segments. Various grits and bonds available.



	Use:	Code:
16 Grit	Extra aggressive HF MF SF VSF - \$97	PD74-16
25 Grit	Aggressive XHF (\$97) HF MF SF VSF - \$86	PD74-25
30/40 Grit	General purpose HF MF SF VSF - \$86	PD74-30
50 Grit	General purpose HF MF - \$86	PD74-50
60 Grit	General purpose HF - \$86	PD74-60
80 Grit	Fine HF MF - \$86	PD74-80
120 Grit	Extra fine HF MF - \$86	PD74-120

ARROW SEGMENT PLUGS

50mm plugs with 74mm plate for use on Floorex and Terrco grinding machines. Available in 3 x or 5 x 10mm high arrow diamond segments, various grits and bonds.



	Use:	Code:
16 Grit	3 segment extra aggressive HF MF SF VSF - \$88	PDA-16
	5 segment aggressive HF MF SF VSF - \$105	PDA5-16
25 Grit	3 segment aggressive HF MF SF VSF - \$85	PDA-25
	5 segment aggressive HF MF SF VSF - \$97	PDA5-25
30/40 Grit	3 segment general purpose HF MF SF VSF - \$79	PDA-30
	5 segment general purpose HF MF SF VSF - \$99	PDA5-30

PCD PLUG - \$160.00

50mm plug with 3 x PCD segments for VERY aggressive coatings removal. For use on Floorex and Terrco grinding machines.



POLISHING MACHINES



**AMAZING
VALUE!!!**



A168P - \$1,490.00

17" (430mm) polishing machine

Low speed, weighted polisher with simple manual control and water feed for polishing or cleaning floors. Features removable water tank. Includes weights, a hard and a soft scrubbing brush, velcro drive board, and a spiked drive board for use with fibre pads.

Voltage:	240V
Motor:	1500W
Speed:	168rpm
Weight:	90kg

A1500B - \$950.00

20" (510mm) burnishing machine

High speed industrial floor polisher with simple manual control for burnishing floors. Ideal for use with 20" floor buffing / burnishing pads and twister pads.

Voltage:	220-240V
Motor:	1800W
Speed:	1500rpm
Weight:	43kg

POLISHING MACHINES



Polivac SV25 - \$2,450.00
400mm rotary suction sander

The most efficient and reliable floor sander in its price range, the Sandivac can also be used for scrubbing and stripping applications. Powered by a heavy duty 4 pole electric motor. Features inbuilt vacuum with large capacity collection bag, dust skirt, 15m lead and fully adjustable handle.

Polivac GAZ20 - \$5,842
20" high speed gas burnisher

A compact, high speed machine delivering long life and reliability. Fitted with the new Closed Loop Engine Emission technology, it automatically ensures that CO emissions are minimised and maintained at safe levels. Features belt-driven drive, inbuilt vacuum and electric start. 9kg gas bottle not included.

Polivac SL2000 Stingray - \$2,615.00
500mm ultra high speed polisher

When you want fast-set, full gloss floors, you can rely on the legendary long life and reliability of this ultra high speed straight-line suction floor burnisher. The Stingray is ideal for large operations and features a belt-driven drive, inbuilt vacuum, 15m lead and fully adjustable handle.

Motor:	1.1kw (1.48hp)
Vacuum:	300W
Speed:	187rpm
Weight:	53kg

Motor:	9.69kw (13hp)
Speed:	2500rpm
Battery:	12V 20Ah
Noise:	89DB
Weight:	95kg

Motor:	1.6kw (2.1hp)
Speed:	1500rpm
Pad Pressure:	10kg
Weight:	46kg

MULTIPLATE

- \$599.00



CONVERTS ALL OLD & NEW POLIVAC FLOOR POLISHERS TO A MULTI-PURPOSE CONCRETE PREPARATION MACHINE

- ✓ Removes plaster, paint, tile adhesive, etc
- ✓ Prepares concrete floors for floor coatings and adhesives
- ✓ Grinds concrete
- ✓ Polishes concrete

Burnishes concrete

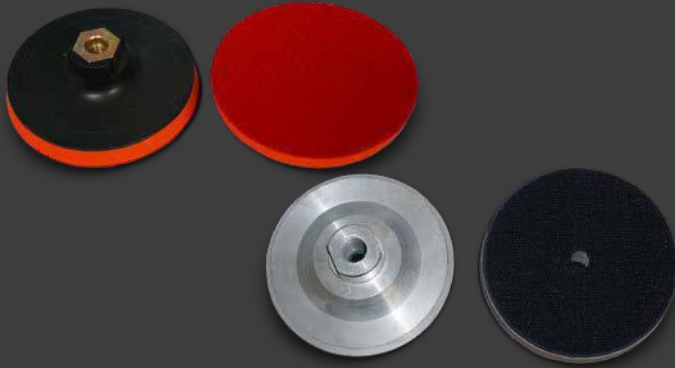
Sands a variety of floor surfaces

Pack includes multiplate, 4 x TCW5MP cup wheels, 4 x BP5 polishing pad holders & 4 holding blocks for slide-on diamonds (diamonds pictured not included)

POLISHING/ BACKING PADS

VELCRO BACKING PADS

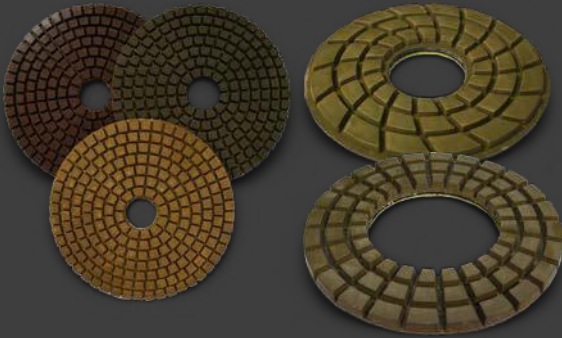
For use with our polishing pads. M14 thread. Available in various sizes in plastic/foam or aluminium.



3" (80mm)	Aluminium - \$25	BP3A
4" (100mm)	Plastic/foam - \$13	BP4
	Aluminium - \$29	BP4A
5" (125mm)	Plastic/foam - \$19	BP5
	Aluminium - \$45	BP5A
7" (180mm)	Plastic/foam - \$23	BP7
	Aluminium - \$54	BP7A

POLISHING PADS

Diamond impregnated flexible resin pads with velcro backing, suitable for wet or dry polishing of concrete. Thicker pads give longer life. Available in various sizes in the following grits: 50, 100, 200, 400, 800, 1500 and 3000.



3" (80mm)	3mm high - \$11	FC33
4" (100mm)	3mm high - \$13	FC43
5" (125mm)	3mm high - \$25	FC53
	5mm high - \$30	FC55
7" (180mm)	3mm high - \$45	FC73
	5mm high - \$50	FC75
9" (230mm)	10mm high WET ONLY - \$85	FC910W

HEXAGONAL POLISHING PADS

Pure resin, thin flexible pads with velcro backing, suitable for polishing concrete. Gives a high quality finish. Available in two sizes in the following grits: 30, 50, 100, 200, 400, 800, 1500 and 3000.

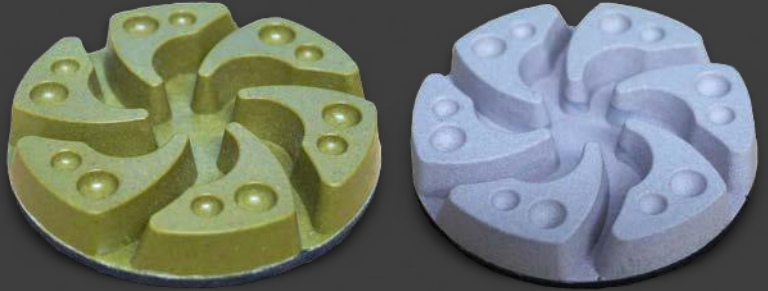


4" (100mm)	2mm high \$15	HFC4
5" (125mm)	2.1mm high - \$25	HFC5P

PUCKS/FLOOR PADS

RESIN POLISHING PUCKS - D\$20, W\$20

3" (80mm) x 12mm solid resin diamond polishing pads with velcro backing. Use on heavy floor grinders with our velcro slide-on base plates. Available in wet or dry in the following grits: 30, 50, 100, 200, 400, 800, 1500 and 3000.



CHEMICAL BOND POLISHING PUCKS - \$35

3" (80mm) x 10mm chemical bond diamond polishing pads with velcro backing. Use on heavy floor grinders with our velcro slide-on base plates. Ideal for removing scratches after metal bond grinding. Available in the following grits: 50, 10, 200, 400, 800, 1500 and 3000.



CERAMIC GRINDING PUCKS - \$40.00

3" (80mm) ceramic grinding discs with velcro backing. Use on heavy floor grinders with our velcro slide-on base plates. Ideal for transitioning between metal bond and resin bond diamonds. Dry grind only. Available in the following grits: 30, 50, 100, 200, 400 and 800.



FLOOR BUFFING / BURNISHING PADS

Floor buffing/burnishing pads specifically designed for concrete. For use on high speed floor polishers and burnishing machines. Available in two sizes and various coarseness levels.



17" (430mm)	Hard stripping - \$17	FPBLACK
	Spray buff & polish - \$17	FPRED
	Soft polish - \$17	FPWHITE
20" (510mm)	Hard stripping - \$20	FP20BLACK
	Spray buff & polish - \$20	FP20RED
	Soft polish - \$20	FP20WHITE

TWISTER PADS

Clean and polish floors without using chemicals. Recommended for use on machines up to 3000rpm. Available in 17" and 20" sizes and the following grits: 400, 800, 1500 and 3000.



17" 400R - \$89
 17" 800W, 1500Y, 3000G - \$79
 20" 400R - \$103
 20" 800W, 1500Y, 3000G - \$90



SMART DIAMOND
— TOOLS PTY LTD —

SMART DIAMOND TOOLS PTY LTD

Factory 5, 76 Rushdale Street, Knoxfield VIC 3180

Phone: 1800 637 347

Email: sales@smarttools.com.au

Web: www.smarttools.com.au

**Contact us for a
price list
today!**

**FLOOR GRINDING /
POLISHING
PRODUCT
CATALOGUE 2023**